

# SportsTurf IRRIGATION

Repair & Product Catalog  
**2024**



**(800) 492-8378**

[www.sportsturfirrigation.com](http://www.sportsturfirrigation.com)

**"SPRINKLERS SO PROFESSIONALLY REBUILT...THEY OPERATE LIKE BRAND NEW"**

# WHAT WE DO BEST

## WHAT WE DO BEST:

**OFFER** cost-saving "Aftermarket" options that save on your irrigation budget: cases, solenoids, valves and more.

**REPAIR** RAIN BIRD® and TORO® sprinklers — send yours to us for repair.

**SELL** fully-reconditioned RAIN BIRD® and TORO® sprinklers. (1 year warranty)

**ACCESS** to a huge inventory of current and hard-to-find parts.

**BUY** your old irrigation system or sprinklers and pay for the freight to ship to us.

**PROVIDE** a fully-funded UPS® label to send your sprinklers and parts in for repair.

**Call or send us an email today!**

# SportsTurf IRRIGATION

We have over **43** years of experience repairing sprinkler parts and components.



# REBUILT CONVERSION ASSEMBLIES & COMPLETE SPRINKLERS

## 1" INLET SPRINKLERS or 1½" INLET SPRINKLERS



**CONVERSION**

**PART CIRCLE  
CONVERSION  
ASSEMBLIES & DRIVE  
MOTORS CAN  
BE REPAIRED!  
\$44**



**COMPLETE**

### 1" FULL CIRCLE CONVERSION ASSEMBLIES

Part Number	Description	Price
89-1982	734 Conversion Assy	\$86.00
102-2530	834S Conversion Assy	\$93.00
TO DT34	DT34 Conversion Assy	\$98.00
102-3212	864 Conversion Assy	\$99.00

### 1½" FULL CIRCLE CONVERSION ASSEMBLIES

Part Number	Description	Price
9-3901	674 Conversion Assy	\$88.00
89-4359	754 Conversion Assy	\$92.00
102-2532	854S Conversion Assy	\$104.00
TO DT54	DT54 Conversion Assy	\$106.00

### 1" PART CIRCLE CONVERSION ASSEMBLIES

Part Number	Description	Price
89-7015	765 Conversion Assy	\$99.00
102-5391	835S Conversion Assy	\$113.00
TO DT35	DT35 Conversion Assy	\$118.00
102-2550	865 Conversion Assy	\$110.00

### 1½" PART CIRCLE CONVERSION ASSEMBLIES

Part Number	Description	Price
89-6998	785 Conversion Assy	\$104.00
102-5393	855S Conversion Assy	\$124.00
TO DT55	DT55 Conversion Assy	\$129.00
102-2552	885S Conversion Assy	\$118.00

## WE DO IT ALL! REBUILT CONVERSION ASSEMBLIES OR COMPLETE SPRINKLERS

### REBUILT 1" COMPLETE SPRINKLERS



DT 34 VIH	\$180.00
DT 35 VIH	\$190.00
734 HYD/COM	\$110.00
734 VIH	\$138.00
765 HYD/COM	\$120.00
765 VIH	\$149.00
834 VIH Series	\$168.00
835 VIH Series	\$180.00

### REBUILT 1½" COMPLETE SPRINKLERS



DT 54 VIH	\$189.00
DT 55 VIH	\$199.00
674 HYD/COM	\$125.00
674 VIH	\$148.00
754 HYD/COM	\$126.00
754 VIH	\$159.00
785 HYD/COM	\$140.00
785 VIH	\$169.00
854 VIH Series	\$170.00
855 VIH Series	\$198.00

Subject to Availability

# VALVES & PILOT VALVES

## AFTERMARKET 1" & 1½" ELECTRIC BOTTOM/FOOT VALVE REPLACEMENTS



**1" BOX OF 6: \$264.00**  
**\$44.00 each**

STI TO 10048 Short Pin - 700 Series  
 STI TO 10024 Long Pin - 800 Series



**COMPARE OUR PRICES!**



**1½" BOX OF 6: \$378.00**  
**\$63.00 each**

STI TO 15003



★★ SPORTSTURF IRRIGATION EXCLUSIVES ★★



### BOTTOM/FOOT VALVES 1" & 1½" (REBUILT)

#### 1" 700 / 800 SERIES



700 Series		
Part Number	Description	Price
89-1048	Electric	\$49.00
89-1047	Check-O	\$26.00
89-1046	Hydraulic	\$29.00
89-1048-R*	Repair	\$30.00
800 Series		
102-0624	Electric	\$49.00
102-0624-R*	Repair	\$30.00

#### 1½" 700/800 SERIES



700/800 Series		
Part Number	Description	Price
102-4003	Electric	\$69.00
89-1037	Check-O	\$42.00
89-1036	Hydraulic	\$45.00
102-4003-R*	Repair	\$33.00

\* Cylinder (Cap) Additional Part Charge on Valve Repair

Part Number	Description	Price
102-5975	Adjustable <b>NO</b> Solenoid	\$37.00
102-5178	Adjustable <b>WITH</b> Solenoid	\$65.00
89-1000	Pilot Valve <b>NO</b> Solenoid	\$31.00
89-0009	Pilot Valve <b>WITH</b> Solenoid	\$56.00
89-1000-R	Pilot Valve - Repair	\$20.00
9-1876	Tubing ½" x 11½"	\$3.80
360-0220	O-Ring Body Assy	\$.45
102-0343	Selector Cam Black	\$4.25

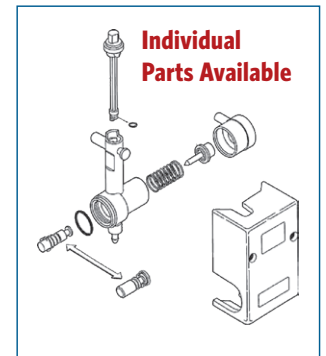
### PILOT VALVES & PILOT VALVE PARTS (REBUILT)



Adj Pilot Valve with Solenoid



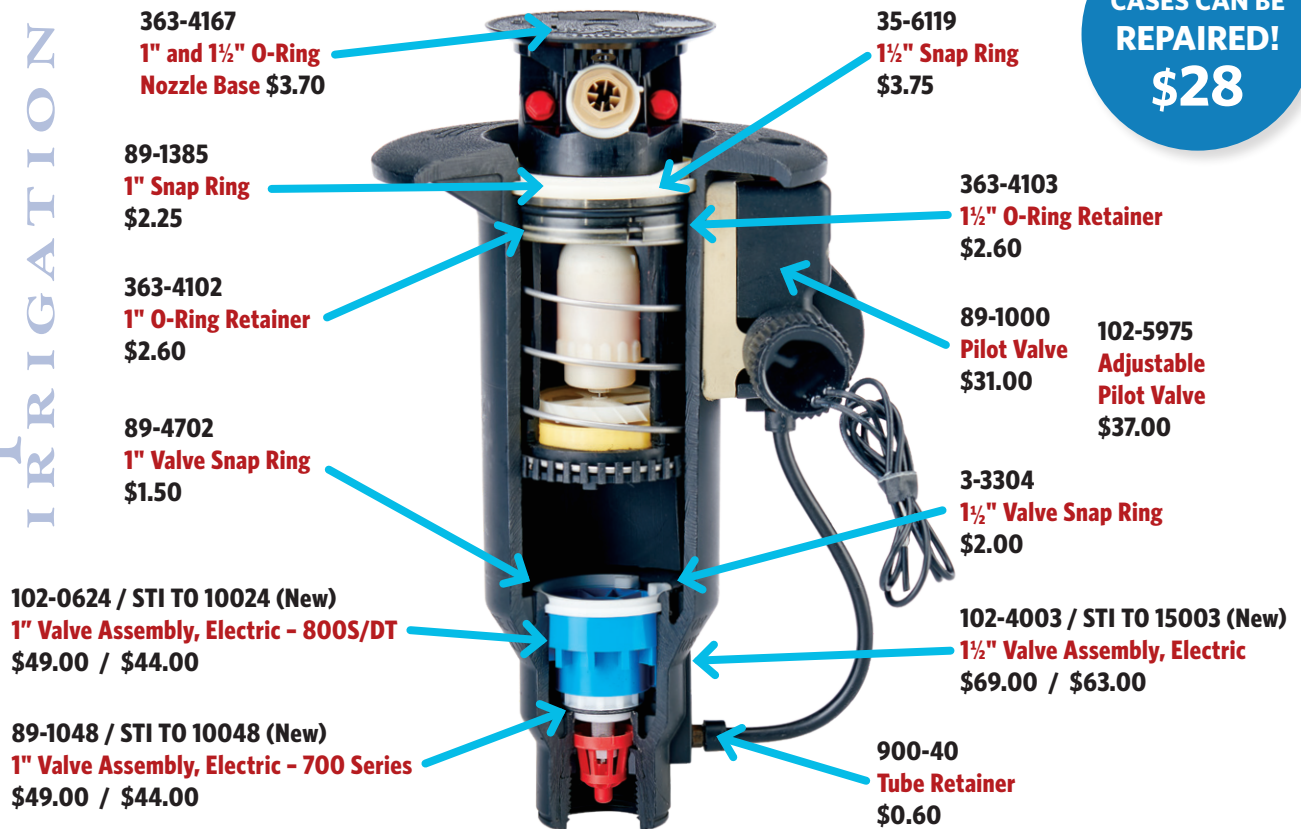
Pilot Valve with Solenoid



SportsTurf  
IRRIGATION

## 1" & 1½" REBUILT SPRINKLER PARTS

**TORO®**  
CASES CAN BE  
REPAIRED!  
**\$28**



### 1" CASE PARTS

Part Number	Description	Price
35-9421	700 Series 1" Elec Case Only <b>NO</b> PV, Valve, Solenoid	\$53.00
89-4868	700 Series 1" Elec Case <b>WITH</b> PV, Valve, Solenoid	\$105.00
102-1090	800 Series 1" Elec Case Only - <b>NO</b> PV, Valve, Solenoid	\$64.00
102-1090-99	800 Series 1" Elec Case Assy <b>WITH</b> PV, Valve, Solenoid	\$137.00
35-9418	700 Series 1" Hydraulic Case Only	\$53.00
89-1385	Snap Ring - Upper to Hold Sprinkler	\$2.25
89-4702	Snap Ring - Lower to Hold Valve	\$1.50

### 1½" CASE PARTS

Part Number	Description	Price
3-3389	700 Series 1½" Elec Case Only <b>NO</b> PV, Valve, Solenoid	\$65.00
89-1016	700 Series 1½" Elec Case Assy <b>WITH</b> PV, Valve, Solenoid	\$109.00
102-1149	800 Series 1½" Elec Case Only <b>NO</b> PV, Valve, Solenoid	\$70.00
102-1149-99	800 Series 1½" Elec Case Assy <b>WITH</b> PV, Valve, Solenoid	\$145.00
3-3343	700 Series 1½" Hydraulic Case Only	\$60.00
35-6119	Snap Ring - Upper to Hold Sprinkler	\$3.75
3-3304	Snap Ring - Lower to Hold Valve	\$2.00



**118-0248 Solenoid**  
(Purchase New or Reconditioned)  
\$44.60 / \$29.00



**102-3443 Solenoid**  
(With surge protection)  
\$43.50

**102-0950 Adapter Flange**  
\$7.80



# O-RINGS, SOLENOIDS & TOOLS

**THESE ALWAYS NEED TO BE REPLACED!**  
**NO BAG QUANTITY REQUIRED**  
**CHANGING O-RINGS JUST MAKES SENSE!**

363-4167  
Nozzle Base for  
1" Inlet & 1 1/2"  
Inlet Sprinklers  
\$3.70

363-4102  
Retainer for 1" Inlet  
Sprinklers  
\$2.60

363-4103  
Retainer for 1 1/2"  
Inlet Sprinklers \$2.60

1" O-Ring  
Retainer

1" & 1 1/2" O-Ring  
Nozzle Base

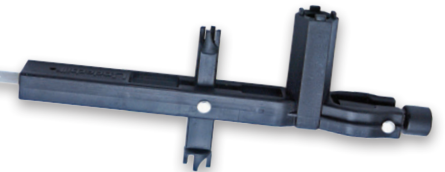
1 1/2" O-Ring  
Retainer



**Check Out NEW Solenoids  
from SportsTurf  
Irrigation**

\$34.00

**NEW**



**UH A-SKTRB  
SuperKey XL™**



**Includes:  
HoseTap™  
1" MHT Brass Swivel  
and 3/4" Adapter**



## PURCHASE SPARE PARTS OR SEND IN FOR REPAIR



**RB 635711-01**  
PAR+ ES Timing Assembly



**RB 633224-01**  
MSC+ Timing Assembly



**RB 633224-02**  
PAR+ Timing Assembly



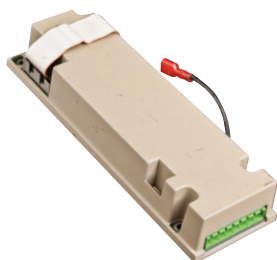
**RB 633224-03**  
PAR 24 Timing Assembly



**RB 633224-04**  
PAR 16 Timing Assembly



**RB HAO200**  
OSM



**RB HAO100**  
ROM-8  
\* Qty Discount Available



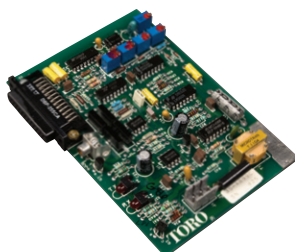
**RB H44500**  
2-Wire Communication  
Module



**RB 633226-02**  
PAR+ ES and PAR+ Power  
Interface Module



**Complete  
PAR+ ES  
Controller  
16 - 72 Stations**



**89-7852**  
NW8000 Modem Board



**102-3497**  
Network VP Faceplate



**91-1952**  
NW8000 Faceplate

**Rain Bird® and Toro®  
Controllers / Faceplates  
can be repaired!\***

**Contact us for a Shipping Label!**

**\* ALL CONTROLLERS SUBJECT TO AVAILABILITY**

# TURF PRODUCTS



**Rain Bird® Quick Couplers  
Valves, Swivels & Keys**  
3/4" - 1½"

## RAIN BIRD® QUICK COUPLER REFERENCE

Order	Top of QC	Bottom of QC
#33	1/2"	3/4"
#44	3/4"	1"
#5	1"	1"
#7	1½"	1½"

## QUICK COUPLER KEY REFERENCE

Order	Top of Key	Bottom of Key
33K	3/4"	1/2"
44K	1"	3/4"
55K	1"	1"
7K	1½"	1½"



**VersaLid™**  
Universal Replacement Lid  
6", 7" & 10" Round Valve Box

## 4 Easy Steps to Build Your Specific Westlake Swing Joint

### STEP 1: SPECIFY A BODY DIAMETER BY NUMBER

First Digit	Diameter Size
1	1"
2	1¼"
3	1½"

### STEP 2: SPECIFY AN INLET BY NUMBER (PIPE IN GROUND)

Second Digit	Inlet Style
1	Socket
2	Spigot (short)
3	Male Thread (MIPT)
4	Male ACME
7	Long Spigot (4" Long)

### STEP 3: SPECIFY OUTLET BY NUMBER (SPRINKLER TO THREAD ONTO)

Third Digit	Outlet Style
1	Socket
2	MIPT (available in 1", 1¼" and 1½" diameter)
3	Enlarging MIPT (available in 1", 1¼" and 1½" diameter)
4	MIPT Special (available in 1" and 1¼" diameter)
8	Increasing ACME (available in 1½" diameter)
0	ACME (available in 1", 1¼" and 1½" diameter)
A	ACME Special (available in 1¼" diameter)

### STEP 4: SPECIFY LAY LENGTH

Last Three Digits	Lay Length	
-208	8"	Standard Sizes
-212	12"	
-218	18"	
		Call for Custom Sizes!

## EXAMPLE

### Step 1

1¼" Diameter

### Step 2

MIPT Inlet

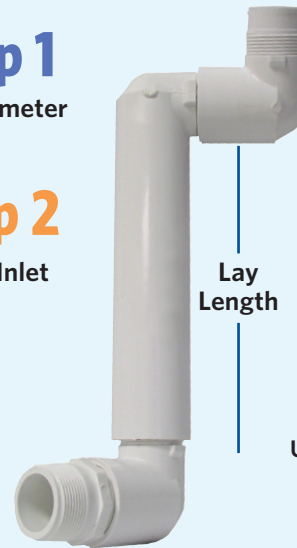
Lay Length

### Step 3

1¼" x 1½"  
MIPT Outlet

### Step 4

18" Lay Length  
Unitized Swing Joint



So if you need a 1¼" Swing Joint with an MIPT inlet and a 1½" Increasing MIPT outlet. (18" Lay Length)

**Your part number would be: 233-218**

Also see [LASCOFITTINGS.COM](http://LASCOFITTINGS.COM) for online configurator

### 3M DBR/Y Splice Kit

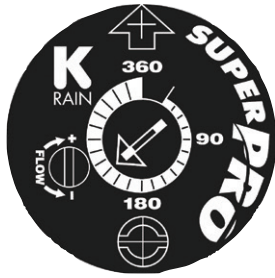
Box of 100  
or Purchase  
Individually





## COMPARE K-RAIN® TO OTHER PGP STYLE ROTORS

**High Performance, Low Maintenance**



This patented "Easy Arc Setting" just made your irrigator's life a whole lot easier!!!

**7 Year Warranty**

Available on ALL models of K-Rain® rotors.

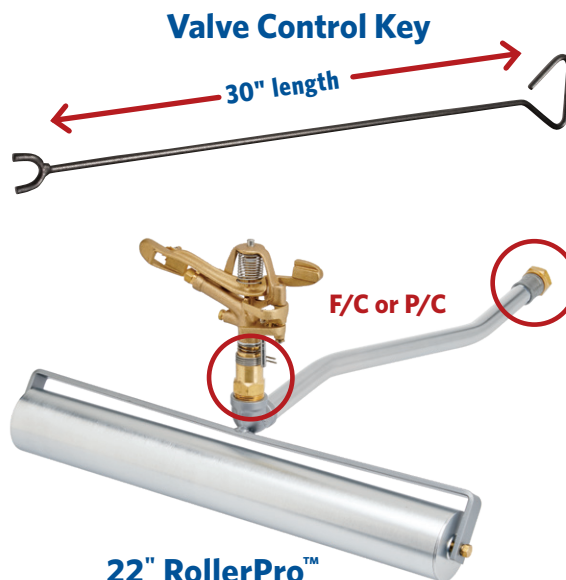


<b>K-RAIN®</b>	<b>MINIPRO</b> 6" 20/Case	<b>SUPERPRO</b> 20/Case	<b>RPS75i</b> 20/Case	<b>PROSPORT</b> 12/Case
<b>INLET</b>	1/2"	3/4"	3/4"	1"
<b>COVERAGE</b>	40° - 360°	40° - 360°	40° - 360°	40° - 360°
<b>FLOW RANGE (GPM)</b>	.8 - 3.3	.8 - 11.1	.9 - 9.7	5.1 - 32.5
<b>PRESSURE (PSI)</b>	20 - 70	20 - 70	20 - 70	40 - 90
<b>RADIUS</b>	18' - 33'	26' - 46'	26' - 48'	43' - 77'
<b>RECLAIMED WATER</b>	<b>YES</b>	<b>YES</b>	<b>YES</b>	<b>YES</b>
<b>WHAT YOU SHOULD KNOW</b>	Perfect for landscape areas and for replacing fixed sprays	Best 3/4" Option Reduce distance & flow rate proportionately	Direct replacement for Hunter® PGP® & PGP® Ultra®	Great Block Type System replacement

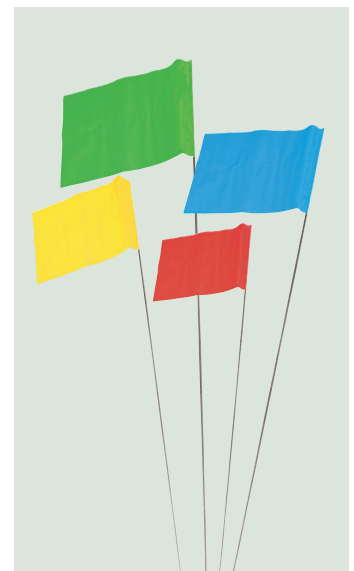
### ★ CLEAN UP AROUND ★ YOUR HEADS



**TAS Trimmer Sprinkler**  
Head Trimmer 3 3/4" - 10"



**22" RollerPro™**  
Works with both 1" and 3/4" hoses using the included adapters and full circle and part circle sprinklers.  
(sprinkler sold separately)

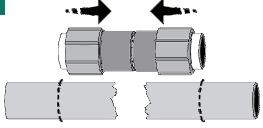


**Marking Flags**  
(Bundle of 100)

# REPAIR COUPLINGS & ACCESSORIES

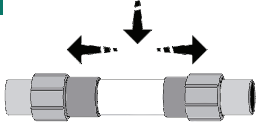
## *KwikRepair*™ WE LOVE THIS PRODUCT & YOU WILL TOO! Couplers or Tees

**1**



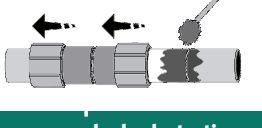
Use fitting as a template to ensure exact fit.

**2**



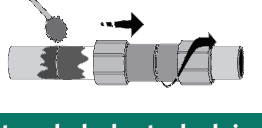
Install fitting and dry fit couplers.

**3**



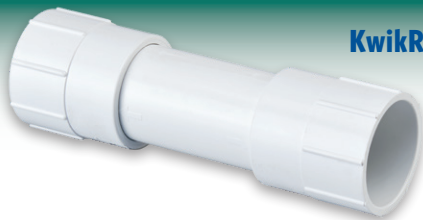
Slide one coupler back at a time. Prime and glue both fitting and body pipe.

**4**

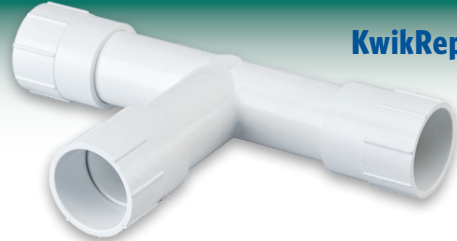


Twist coupler back onto glued pipe until arrows on fitting are fully exposed. Hold until set.

### A Permanent Solvent Weld Repair Fitting



**KwikRepair Coupling**  
1/2" - 4"



**KwikRepair Tee**  
1/2" - 2"

### Other Coupler Options



**Harco Knock On Repair Coupling**  
1 1/2" - 6"



**NDS Compression Coupling**  
1" - 3"



**Slip Fix Telescopic Coupling**  
1/2" - 2"

### TurboTrim™ Head Trimmer

Comfortable Rubber Handle Grips

Super Heavy Duty Steel Construction & Powder Coated Finish

Forward and Reverse Drive Ratchet Mechanism

7", 8" or 11"

\*T Handle and Blades Sold Separately



**Blade Depth Stopper**  
Keeps wires from getting cut!

### PowerTrim™ Pro Series

Designed to Fit Most Major Straight Shaft Power Trimmer Bands  
7", 8" or 11"



**A Blade Adapter Kit**  
is needed to mount any blade

## ULTRAMAX™ HOSES



### UltraMax™ Featherweight

- 1200 psi Burst / 300 psi Operating  
 3/4" = 9 lbs, 1" = 15 lbs (per 100 ft)
- Extremely lightweight with high pressure rating
  - Smooth outer fabric slides over turf without scuffing



### UltraMax™ Blue

- 1200 psi Burst / 300 psi Operating  
 3/4" = 27 lbs, 1" = 43 lbs (per 100 ft)
- Best combination of weight, durability, flexibility, pressure strength & flow rate
  - Soft & flexible - won't scuff greens



### UltraMax™ Red

- 800 psi Burst / 200 psi Operating  
 3/4" = 38 lbs, 1" = 59 lbs (per 100 ft)
- Ultimate choice for long life under heavy use
  - Kink, tangle & weather resistant



### UltraMax™ Green

- 800 psi Burst / 200 psi Operating  
 3/4" = 28 lbs, 1" = 38 lbs (per 100 ft)
- Lightweight with a high burst pressure rating
  - Smooth outer texture won't scuff greens



### UltraMax™ Clear

- 600 psi Burst / 150 psi Operating  
 3/4" = 20 lbs, 1" = 32 lbs (per 100 ft)
- Lightweight & economical
  - Ideal for light to medium commercial duty

## ULTRAMAX™ NOZZLES



**Turbo Shift** (12-43 GPM)  
**Premium Plus Pro Series**  
 3/4" & 1"



**Full Throttle** (15-40 GPM)  
**Premium Plus Pro Series**  
 3/4" & 1"



**Turbo Shift** (12-43 GPM)  
**Premium Pro Series**  
 3/4" & 1"



**Full Throttle** (15-40 GPM)  
**Premium Pro Series**  
 3/4" & 1"



**RainPro™ Shower Nozzle** (40 GPM)



**Hunter® SpotShot Spray Nozzle**  
 (35 GPM)  
 3/4" & 1"



**Magnum™ Nozzle**

**CoolPro™ Valve & Nozzle**  
 (4-6 GPM)



**Precision™ Nozzles**



## Magnum™ Stinger **NEW**

The All PRESSURE NOZZLE

The Magnum™ Stinger nozzle is an incredibly smooth operating nozzle, making it ideal for low pressure or low flow rate situations.



# ACCESSORIES

## PelletPro™ Applicator Gun

For Solid Wetting Agent Tablets



## LiquidPro™ Applicator Gun

For Liquid Wetting Agents



**Tournament Ready® Plus**  
with Actosol® Pellets

## HOSE CADDIE™ Hose Reel

No more lifting, twisting, or winding up hoses



### FEATURES:

- Carries Over 125 ft of 1" or 150 ft of 3/4" Hose
- Quick Coupler Key Holder Mounted to Frame
- Optional Hose Guide Mounts to Reel for Easy Winding
- Includes a 10 ft UltraMax Blue Leader Hose



## PowerFLOW Series

## Twist-Ease™ Kink Eliminator - Never Fight with a Tangled Hose Again!



### FEATURES:

- High Quality, High Flow, Brass Swivel that fits between your hose and nozzle
- Simply pull the hose by the nozzle and all twists, kinks and tangles will spin out with the swivel making untangling your hose a breeze!
- Available in 1" NPSH or 3/4" GHT



## DRAINBLASTER™ Nozzle

High Pressure Drain Cleaning Nozzle 3/4" & 1"



This unique hose-end, high pressure nozzle guides itself in cleaning out drains, to remove debris with ease. Special feature includes a wire attachment connector for using wire locator to determine drain route.

## POWERBLAST™ Super Sweeper

Solid Brass Sweeper Nozzle

### FEATURES:

- Solid Machined Brass Construction
- Constant Flow Smooth Operation
- Simple Reliable Long Life



## HIGH FLOW VALVES AND ADAPTERS



## POWERGULP™ Pump

For Professional Water Removal

### Pump Specifications:

- Flow Rate - 11 GPM
- Length - 48"
- Weight - 4 lbs (without battery)
- Battery Run Time - Up to 60 Minutes w/ 4 Amp Hr. Battery
- Head Height - 15 ft
- Not For Use on Flammable Liquids
- 18 Volt



# POWERGULP™

MudGuard™

## GULP™ PRO Pumps

Water Removal Pumps 72" or 36" discharge hose



GULP™ PRO Syringe

**SPORTSTURF IRRIGATION**  
**YOUR SOURCE FOR SPRINKLER PRODUCTS**  
**USED ON THE COURSE!**  
**GRAB A BOX AND GET BUSY!**



**IRRIGATORS TRUST SPORTSTURF IRRIGATION**  
**FOR REBUILT, NEW AND AFTERMARKET PRODUCTS**

Scan and Sign Up to Receive  
Special Offers & Discounts!



**SportsTurf**  
**IRRIGATION**

**(800) 492-8378**

**[www.sportsturfirrigation.com](http://www.sportsturfirrigation.com)**

*SportsTurf Irrigation is an independent service and manufacturing business and is not affiliated with, or authorized as a representative, service provider, or contractor of services by The Toro Company or Rain Bird Corporation. All references to OEM brands, trademarks, model numbers, and/or the display of certain identifying images herein are done solely for the purpose of identification of independent services provided by SportsTurf Irrigation. All trademarks contained herein belong to their respective manufacturers. Pricing terms and conditions are subject to change without notification. Visit our website at [www.sportsturfirrigation.com](http://www.sportsturfirrigation.com) for additional terms and conditions. This catalog and all its content are protected by intellectual property or proprietary rights held solely by Water Utilities Services, Inc. None of the images or copy may be copied or reproduced for commercial use without written approval from Water Utilities Services, Inc.*