

SportsTurf

IRRIGATION

Repair & Product 2025 Catalog



THE BEST IN THE BUSINESS FOR AFTERMARKET PARTS AND REBUILT SPRINKLERS

(800) 492-8378

sportsturfirrigation.com



WHAT WE DO BEST

FOR OUR CUSTOMERS, WE:

OFFER cost-saving "Aftermarket" options for your irrigation budget: cases, solenoids, valves and more.

REPAIR RAIN BIRD® and TORO® sprinklers and controllers— send yours to us for repair.

SELL fully-reconditioned RAIN BIRD® and TORO® sprinklers. (1 year warranty)

STOCK a huge inventory of current and hard-to-find parts.

BUY your old irrigation system or sprinklers and pay for the freight to ship to us.

PROVIDE a fully-funded UPS® label to send your sprinklers and parts in for repair.



We have over **44** years of experience repairing sprinkler parts and components.



REBUILT EAGLE™ ROTORS & REPAIR

REBUILT EAGLE™ ROTORS, CASE ASSEMBLIES & COMPLETE SPRINKLERS

ROTORS (INTERNAL ONLY)

Part Number	Description	Price
RB 211580	500 Full Circle	\$85.00
RB 211581	550 Part Circle	\$93.00
RB 211435	700 Full Circle	\$85.00
RB 211544	750 Part Circle	\$93.00
RB 214751	751 Adjustable	\$93.00
RB 210786	900 Full Circle	\$98.00
RB 211442	950 Part Circle	\$115.00

\$32
REPAIR
PLUS PARTS



\$30
REPAIR
PLUS PARTS

CASE ASSEMBLIES (CASE, VALVE & SELECTOR)

Part Number	Description	Price
RB 212466-02C	700 1 1/4" Inlet	\$185.00
RB 212475-03C	900 1 1/2" Inlet	\$190.00

>>> (INCLUDES A NEW STI SOLENOID) <<<

COMPLETE SPRINKLERS (SWING JOINT READY)

Part Number	Description	Price
Eagle 700	Full Circle 1 1/4" Inlet	\$220.00
Eagle 750/751	Part Circle/Adj 1 1/4" Inlet	\$240.00
Eagle 900	Full Circle 1 1/2" Inlet	\$260.00
Eagle 950	Part Circle 1 1/2" Inlet	\$271.00

>>> (INCLUDES A NEW STI SOLENOID) <<<

\$37
REPAIR
PLUS PARTS




BLOCK ("B") STYLE 1" INLET

Part Number	Description	Price
RB 211489-03	Case Only for 500/751	\$68.70
RB G03500	700 Full Circle	\$108.00
RB G06500	750/751 Part Circle/Adj	\$118.00
RB 215001	SAM/Screen Kit	\$30.10



REPAIR
REBUILD
RECONDITION



**LASCO NPT-ACME
OUTLET ADAPTER**
AVAILABLE IN 1", 1 1/4" & 1 1/2"

G102-010 "B" Cases 1"	G202-012 500/752 1 1/4"	G302-015 900/950 1 1/2"
-----------------------------	-------------------------------	-------------------------------

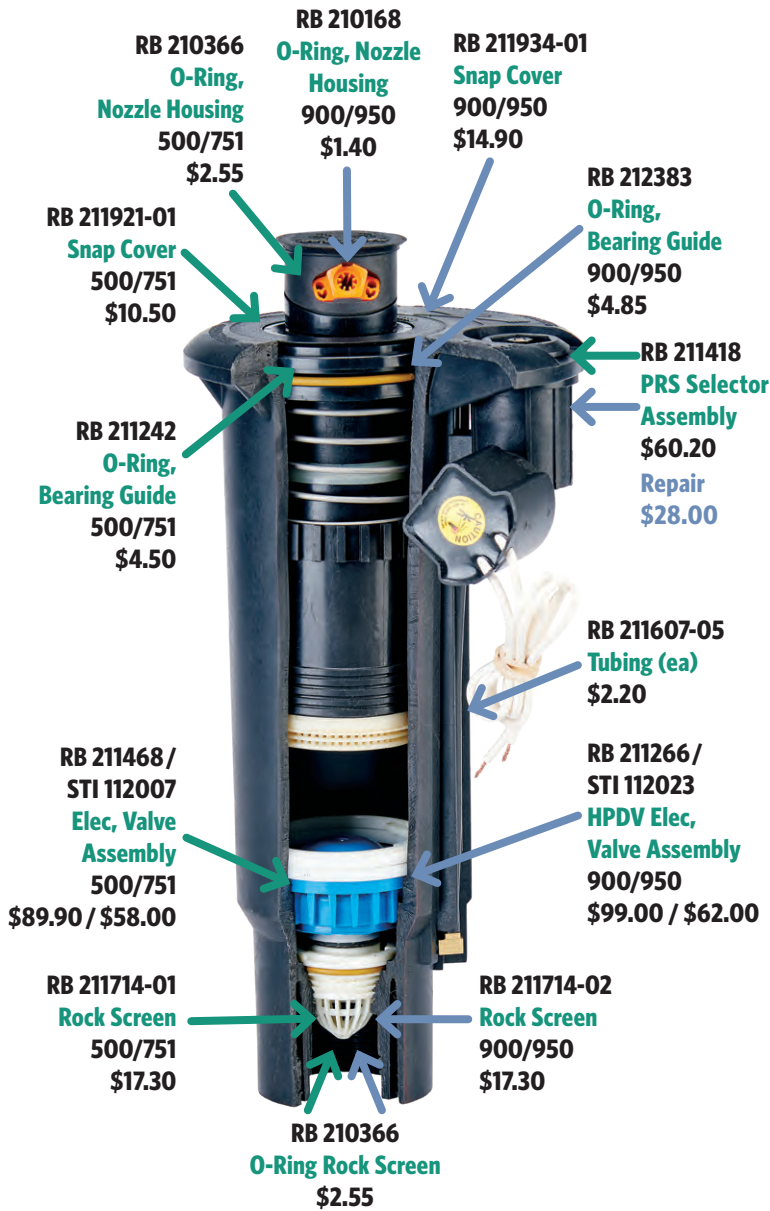
O-RINGS FOR SWING JOINTS ALSO AVAILABLE

**SAM SCREEN
215001**



POPULAR EAGLE™ PARTS

EAGLE™ 700/900 SERIES SPRINKLER



SELECTOR REPAIR KITS

RB 212150 PRS/Selector Repair Kit \$59.95



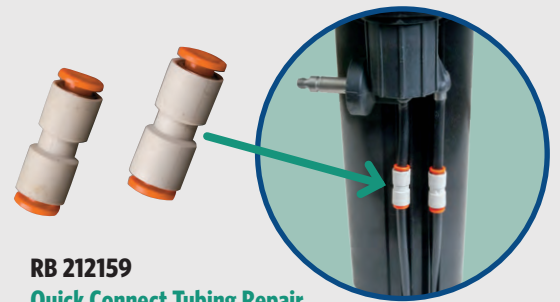
RB 212244 Green Seal (After 4/01) \$7.45



RB 213462 Golf Black Solenoid \$44.35



RB 212159 Quick Connect Tubing Repair \$10.50 (each)



WE SHIP NATIONWIDE. DON'T FEEL LOCKED INTO YOUR LOCAL DISTRIBUTOR.

PURCHASE THIS KIT TO REPAIR THIS RAIN BIRD® VALVE



WE ALSO STOCK A COMPLETE LINE OF RAIN BIRD® PARTS

BRAND NEW RAIN BIRD® EAGLE™ “AFTERMARKET” PRODUCTS

Compare Our Pricing — Your Savings Are Substantial!

EAGLE 700/900 CASES (ONLY) ACME THREAD



700 SERIES BOX OF 6:
STI 121630 \$330.00
900 SERIES BOX OF 6:
STI 122024 \$390.00

EAGLE 700/900 CASE ASSEMBLY WITH NEW STI SOLENOID



700 SERIES:
\$185.00

900 SERIES:
\$190.00

EAGLE 700 SERIES ELECTRIC BOTTOM/FOOT VALVES



700 SERIES BOX OF 6:
STI 112007 \$348.00

EAGLE 900 SERIES ELECTRIC BOTTOM/FOOT VALVES



900 SERIES BOX OF 6:
STI 112023 \$372.00

YOU ASKED... WE LISTENED:

WE NOW OFFER **CASES, CASE ASSEMBLIES, VALVES, AND SOLENOIDS** FOR YOUR **EAGLE™ 700/900 SPRINKLERS**

USE YOUR **SAME TOOLS** ON OUR **AFTERMARKET PRODUCTS**

THESE PRODUCTS ARE PROVEN AND COST SUBSTANTIALLY LESS!

AFTERMARKET SOLENOIDS
STI 213462-99 \$34.00



★★ **SPORTSTURF IRRIGATION EXCLUSIVES** ★★



BRASS IMPACT SPRINKLERS & PARTS

WE STILL HAVE INVENTORY AND PARTS FOR THESE GOLDEN OLDIES!



Purchase Rebuilt

51/47 Internal \$65.00/\$75.00
51/47 Complete \$105.00/\$120.00

\$32
REPAIR
PLUS PARTS



Purchase Rebuilt

51/47 Internal \$65.00/\$75.00
51/47 Complete \$90.00/\$98.00



Purchase Rebuilt

51/47 Internal \$65.00/\$75.00



Purchase Rebuilt

91/95 Internal \$90.00/\$98.00
91/95 Complete \$180.00/\$195.00

REBUILT DR SPRINKLER & PARTS

RB 207955 DR Case Assy N/S Only 47/51 \$95.00 Repair \$30.00
RB 208227 Plastic Lid \$13.00
RB 208625 Plastic Lid 91/95 \$23.00
RB 207995 DR Case Assy 91/95 \$110.00 Repair \$30.00
RB 208395 Upper Ring Snap 47/51 & 91/95 \$3.25
RB 203936 Part Circle Adapter \$10.50
RB 208396 Snap Ring (2) \$3.50 ea
RB 211714-02 Rock Screen \$17.30
RB 207654 Inlet Adapter \$9.90
RB 210808-03 PRS Selector Assembly N/S Only \$47.00 Repair \$30.00



RB 203731
Bearing Spring Washer Kit
\$7.50



RB 203732
Bearing Washer Kit
\$9.75



BEARING WASHER KIT RB 21-51 SERIES	
RB 200 031	Top seal, teflon washer, sm white
RB 200 036	Lower seal, buna
RB 201 600	Wearing ring, gold
RB 202 160	Speed washer, teflon, white
RB 201 562	Washer seal, gray

SportsTurf
 THE LEADER IN IRRIGATION
 800-492-8378
 SportsTurfIrrigation.com



RB 211579
Eagle's Nest Adapter™ (NEW)
\$118.00



RB 627167
Retainer
\$3.00



RB 210069-85
Selector Stem Kit O/S
\$13.50

DON'T SEE IT ON THIS PAGE? CALL FOR AVAILABILITY OF OTHER BRASS SPRINKLERS & PARTS



UH A-PHG-160K
Headchecker w/
Gauge, Pitot Tube
& 30" Hose



UH A-SKTRB
SuperKey XL™



RB B41710
Valve Insertion Tool
500/752



RB D02203
Snap Ring Pliers
DR, 900/950



UH A-HPG
Dynamic Water
Pressure Gauge
(3/4", 1", 1" x 3/4")



RB B41730
Valve Insertion Tool
900/950



RB D02236
Snap Ring Pliers
500/752



RB D02221
Selector Valve Key 18"



RB D02215
Selector Valve Key 7"

RB D02237
Installation
Socket for
Rock Screen



RB D05205
Universal Hose Adapter
500/950

RB B41720
Selector Service
Tool/Key



Easy Reach™
Key

Rain Bird®



UH A-ERR
Easy Reach™
Key
15" Length

Includes:
HoseTap™ 1" MHT Brass
Swivel and 3/4" Adapter



UH HN-R125S - 500/751
UH HN-R150S - 900/950
HoseTap™ w/Swivel
Purchase with or Without Swivel



HoseTap™

BRASS VALVES & PARTS



RB 208554
Elbow Filter Assembly
(Bag of 5)



RB 209814.04-99
2" EFB-CP Bonnet Assy
w/New Solenoid



RB 236239
E-Z Bleed Solenoid



RB 209814-03
1 1/2" EFB-CP Bonnet Assy
Less Solenoid
RB 209814-04
2" EFB-CP Bonnet Assy Less Solenoid



Brass Valves - Gate,
Angle and Globe



RB 200EFB-CP
Electric Brass Valve

Send Your Electric Brass Valves to SportsTurf Irrigation for Repair

PLASTIC VALVE OPTIONS

**2" & 1 1/2" ELECTRIC BRASS VALVE
REPLACEMENTS FROM K-RAIN®**

**2" & 1 1/2" PEB OR PESB
FROM RAIN BIRD®**



2" PRO SERIES 150



1 1/2" PRO SERIES 150



2" PEB/PESB



1 1/2" PEB/PESB

Electric Brass Valves are VERY expensive. K-Rain® plastic valves offer all the features and even more benefits than the brass valve equivalent. These are a HUGE cost saver and have a proven track record.

The PESB Series uses patented scrubber technology for reliable performance in dirty water applications.

REBUILT CONVERSION ASSEMBLIES & COMPLETE SPRINKLERS

1" INLET SPRINKLERS or 1½" INLET SPRINKLERS



CONVERSION

**PART CIRCLE
CONVERSIONS &
DRIVE MOTORS
CAN BE REPAIRED!**

\$44



COMPLETE

1" FULL CIRCLE CONVERSION ASSEMBLIES

Part Number	Description	Price
89-1982	734 Conversion Assy	\$86.00
102-2530	834S Conversion Assy	\$98.00
TO DT34	DT34 Conversion Assy	\$98.00
102-3212	864 Conversion Assy	\$99.00

1½" FULL CIRCLE CONVERSION ASSEMBLIES

Part Number	Description	Price
9-3901	674 Conversion Assy	\$88.00
89-4359	754 Conversion Assy	\$92.00
102-2532	854S Conversion Assy	\$106.00
TO DT54	DT54 Conversion Assy	\$106.00

1" PART CIRCLE CONVERSION ASSEMBLIES

Part Number	Description	Price
89-7015	765 Conversion Assy	\$99.00
102-5391	835S Conversion Assy	\$118.00
TO DT35	DT35 Conversion Assy	\$118.00
102-2550	865 Conversion Assy	\$110.00
Repair	Part Circle Conversion Assy	\$44.00

1½" PART CIRCLE CONVERSION ASSEMBLIES

Part Number	Description	Price
89-6998	785 Conversion Assy	\$104.00
102-5393	855S Conversion Assy	\$129.00
TO DT55	DT55 Conversion Assy	\$129.00
102-2552	885S Conversion Assy	\$118.00
Repair	Part Circle Conversion Assy	\$44.00

WE DO IT ALL! REBUILT CONVERSION ASSEMBLIES OR COMPLETE SPRINKLERS

REBUILT 1" COMPLETE SPRINKLERS



DT 34 VIH	\$180.00
DT 35 VIH	\$190.00
734 HYD/COM	\$110.00
734 VIH	\$138.00
765 HYD/COM	\$120.00
765 VIH	\$149.00
834 VIH Series	\$180.00
835 VIH Series	\$190.00

REBUILT 1½" COMPLETE SPRINKLERS



DT 54 VIH	\$189.00
DT 55 VIH	\$204.00
674 HYD/COM	\$125.00
674 VIH	\$155.00
754 HYD/COM	\$126.00
754 VIH	\$159.00
785 HYD/COM	\$140.00
785 VIH	\$169.00
854 VIH Series	\$189.00
855 VIH Series	\$204.00

Subject to Availability

VALVES & PILOT VALVES

AFTERMARKET 1" & 1½" ELECTRIC BOTTOM/FOOT VALVE REPLACEMENTS



1" BOX OF 6: \$264.00
\$44.00 each

STI TO 10048 Short Pin - 700 Series
STI TO 10024 Long Pin - 800 Series



1½" BOX OF 6: \$378.00
\$63.00 each

STI TO 15003

PROVEN COST SAVERS



★★ **SPORTSTURF IRRIGATION EXCLUSIVES** ★★



BOTTOM/FOOT VALVES 1" & 1½" (REBUILT)

1" 700 / 800 SERIES



700 Series		
Part Number	Description	Price
89-1048	Electric	\$49.00
89-1047	Check-O	\$26.00
89-1046	Hydraulic	\$29.00
89-1048-R*	Repair	\$30.00
800 Series		
102-0624	Electric	\$49.00
102-0624-R*	Repair	\$30.00

1½" 700/800 SERIES



700/800 Series		
Part Number	Description	Price
102-4003	Electric	\$69.00
89-1037	Check-O	\$42.00
89-1036	Hydraulic	\$45.00
102-4003-R*	Repair	\$33.00

* Cylinder (Cap) Additional Part Charge on Valve Repair

Part Number	Description	Price
102-5975	Adjustable NO Solenoid	\$39.00
102-5178	Adjustable WITH Solenoid	\$65.00
89-1000	Pilot Valve NO Solenoid	\$33.00
89-0009	Pilot Valve WITH Solenoid	\$56.00
89-1000-R	Pilot Valve - Repair	\$20.00
9-1876	Tubing ½" x 11½"	\$3.80
360-0220	O-Ring Body Assy	\$.45
102-0343	Selector Cam Black	\$4.25

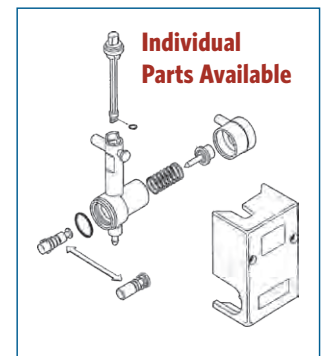
PILOT VALVES & PILOT VALVE PARTS (REBUILT)



Adj Pilot Valve with Solenoid

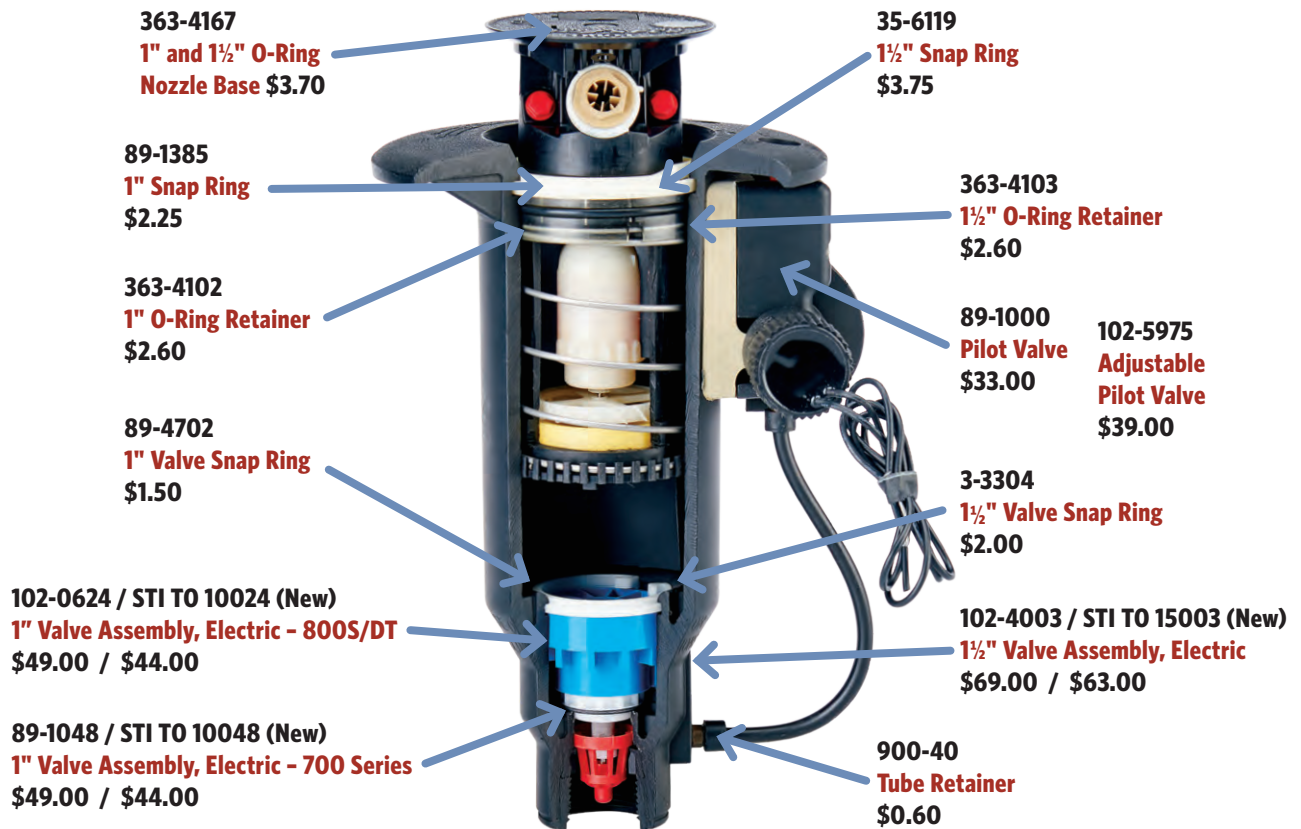


Pilot Valve with Solenoid



Individual Parts Available

1" & 1½" REBUILT SPRINKLER PARTS



1" CASE PARTS

Part Number	Description	Price
35-9421	700 Series 1" Elec Case Only NO PV, Valve, Solenoid	\$53.00
89-4868	700 Series 1" Elec Case WITH PV, Valve, Solenoid	\$105.00
102-1090	800 Series 1" Elec Case Only - NO PV, Valve, Solenoid	\$64.00
102-1090-99	800 Series 1" Elec Case Assy WITH PV, Valve, Solenoid	\$137.00
35-9418	700 Series 1" Hydraulic Case Only	\$53.00
89-1385	Snap Ring - Upper to Hold Sprinkler	\$2.25
89-4702	Snap Ring - Lower to Hold Valve	\$1.50


1½" CASE PARTS

Part Number	Description	Price
3-3389	700 Series 1½" Elec Case Only NO PV, Valve, Solenoid	\$65.00
89-1016	700 Series 1½" Elec Case Assy WITH PV, Valve, Solenoid	\$109.00
102-1149	800 Series 1½" Elec Case Only NO PV, Valve, Solenoid	\$70.00
102-1149-99	800 Series 1½" Elec Case Assy WITH PV, Valve, Solenoid	\$145.00
3-3343	700 Series 1½" Hydraulic Case Only	\$60.00
35-6119	Snap Ring - Upper to Hold Sprinkler	\$3.75
3-3304	Snap Ring - Lower to Hold Valve	\$2.00

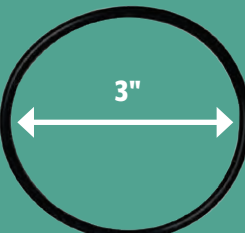


THESE ALWAYS NEED TO BE REPLACED! NO BAG QUANTITY REQUIRED CHANGING O-RINGS JUST MAKES SENSE!

363-4167
Nozzle Base for
1" Inlet & 1/2"
Inlet Sprinklers
\$3.70



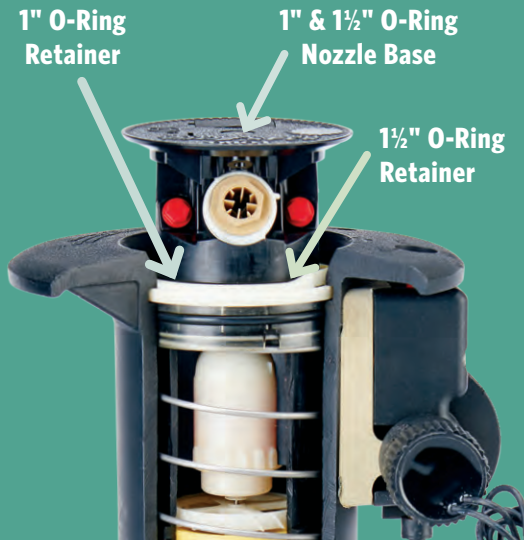
363-4102
Retainer for 1" Inlet
Sprinklers
\$2.60




1" O-Ring Retainer

1" & 1/2" O-Ring Nozzle Base

1/2" O-Ring Retainer





995-82
Arc Adjustment Tool

Check Out **NEW** Solenoids from SportsTurf Irrigation

\$34.00



UH A-SKTRB
SuperKey XL™



Easy Reach™
Key

Toro®



UH A-ERT
Easy Reach™
Key
15" Length

Includes:
HoseTap™
1" MHT Brass Swivel
and 3/4" Adapter



UH HN-T100S
1" Inlet
UH HN-T150S
1 1/2" Inlet



HoseTap™

Purchase With or Without Swivel

PURCHASE SPARE PARTS OR SEND IN FOR REPAIR



RB 635711-01
PAR+ ES Timing Assembly



RB 633224-01
MSC+ Timing Assembly



RB 633224-02
PAR+ Timing Assembly



RB 633224-03
PAR 24 Timing Assembly



RB 633224-04
PAR 16 Timing Assembly



RB HAO200
OSM



RB HAO100
ROM-8
* Qty Discount Available



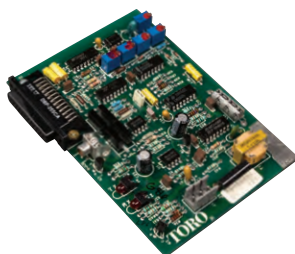
RB H44500
2-Wire Communication
Module



RB 633226-02
PAR+ ES and PAR+ Power
Interface Module



**Complete
PAR+ ES
Controller
16 - 72 Stations**



89-7852
NW8000 Modem Board



102-3497
Network VP Faceplate



91-1952
NW8000 Faceplate

**Rain Bird® and Toro®
Controllers / Faceplates
can be repaired!***

Contact us for a Shipping Label!

*** ALL CONTROLLERS SUBJECT TO AVAILABILITY**

TURF PRODUCTS



**Rain Bird® Quick Couplers
Valves, Swivels & Keys
3/4" - 1½"**

RAIN BIRD® QUICK COUPLER REFERENCE

Order	Top of QC	Bottom of QC
#33	1/2"	3/4"
#44	3/4"	1"
#5	1"	1"
#7	1½"	1½"

QUICK COUPLER KEY REFERENCE

Order	Top of Key	Bottom of Key
33K	3/4"	1/2"
44K	1"	3/4"
55K	1"	1"
7K	1½"	1½"



**VersaLid™
Universal Replacement Lid
6", 7" & 10" Round Valve Box**

4 Easy Steps to Build Your Specific Westlake Swing Joint

STEP 1: SPECIFY A BODY DIAMETER BY NUMBER

First Digit	Diameter Size
1	1"
2	1¼"
3	1½"

STEP 2: SPECIFY AN INLET BY NUMBER (PIPE IN GROUND)

Second Digit	Inlet Style
1	Socket
2	Spigot (short)
3	Male Thread (MIPT)
4	Male ACME
7	Long Spigot (4" Long)

STEP 3: SPECIFY OUTLET BY NUMBER (SPRINKLER TO THREAD ONTO)

Third Digit	Outlet Style
1	Socket
2	MIPT (available in 1", 1¼" and 1½" diameter)
3	Enlarging MIPT (available in 1", 1¼" and 1½" diameter)
4	MIPT Special (available in 1" and 1¼" diameter)
8	Increasing ACME (available in 1½" diameter)
0	ACME (available in 1", 1¼" and 1½" diameter)
A	ACME Special (available in 1¼" diameter)

STEP 4: SPECIFY LAY LENGTH

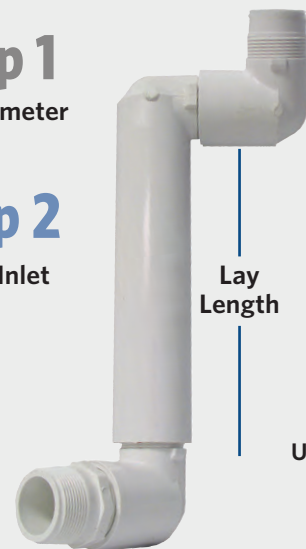
Last Three Digits	Lay Length	
-208	8"	Standard Sizes
-212	12"	
-218	18"	
		Call for Custom Sizes!

EXAMPLE

Step 1
1¼" Diameter

Step 2
MIPT Inlet

Step 3
1¼" x 1½"
MIPT Outlet



Step 4
18" Lay Length
Unitized Swing Joint

So if you need a 1¼" Swing Joint with an MIPT inlet and a 1½" Increasing MIPT outlet. (18" Lay Length)
your part number would be: 233-218
Also see LASCOFITTINGS.COM for online configurator

3M DBR/Y Splice Kit

Box of 100
or Purchase
Individually



COMPARE K-RAIN® TO OTHER PGP STYLE ROTORS

High Performance, Low Maintenance



This patented "Easy Arc Setting" just made your irrigator's life a whole lot easier!!!

7 Year Warranty

Available on ALL models of K-Rain® rotors.

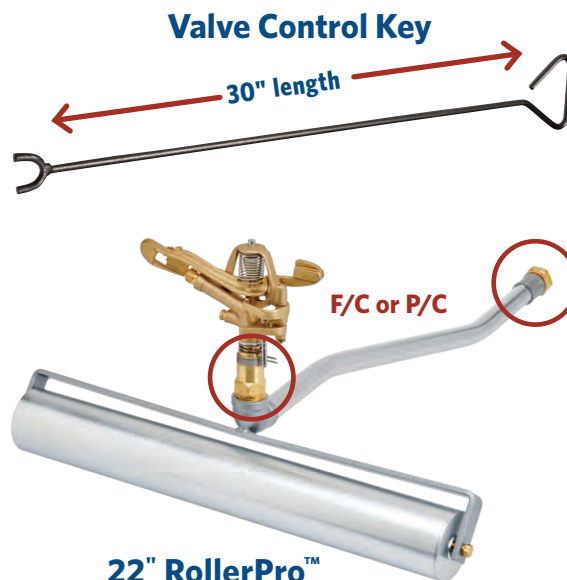


K-RAIN®	MINIPRO 6" 20/Case	SUPERPRO 20/Case	RPS75i 20/Case	PROSPORT 12/Case
INLET	1/2"	3/4"	3/4"	1"
COVERAGE	40°- 360°	40°- 360°	40°- 360°	40°- 360°
FLOW RANGE (GPM)	.8 - 3.8	.8 - 11.1	.9 - 9.7	5.1 - 32.5
PRESSURE (PSI)	20 - 70	20 - 70	20 - 70	40 - 90
RADIUS	18' - 33'	26' - 46'	26' - 48'	43' - 77'
RECLAIMED WATER	YES	YES	YES	YES
WHAT YOU SHOULD KNOW	Perfect for landscape areas and for replacing fixed sprays	Best 3/4" Option Reduce distance & flow rate proportionately	Direct replacement for Hunter® PGP® & PGP® Ultra®	Great Block Type System replacement

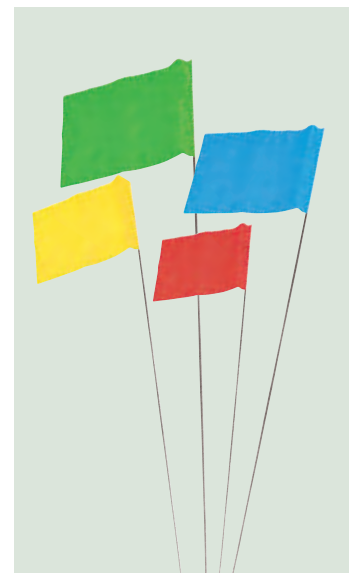
★ CLEAN UP AROUND ★ YOUR HEADS



TAS Trimmer Sprinkler
Head Trimmer 3 3/4" - 10"



22" RollerPro™
Works with both 1" and 3/4" hoses using the included adapters and full circle and part circle sprinklers.
(sprinkler sold separately)

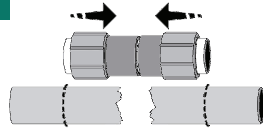


Marking Flags
(Bundle of 100)

REPAIR COUPLINGS & ACCESSORIES

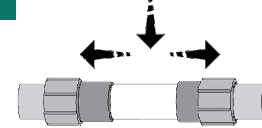
KwikRepair™ WE LOVE THIS PRODUCT & YOU WILL TOO!

1



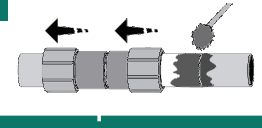
Use fitting as a template to ensure exact fit.

2



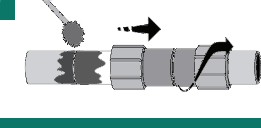
Install fitting and dry fit couplers.

3



Slide one coupler back at a time. Prime and glue both fitting and body pipe.

4



Twist coupler back onto glued pipe until arrows on fitting are fully exposed. Hold until set.

A Permanent Solvent Weld Repair Fitting



KwikRepair Coupling
1/2" - 4"

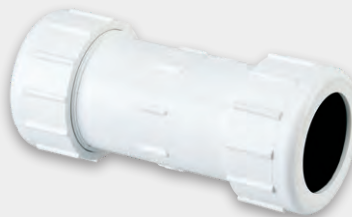


KwikRepair Tee
1/2" - 2"

Other Coupler Options



Harco Knock On Repair Coupling
1 1/2" - 6"



NDS Compression Coupling
1" - 3"



Slip Fix Telescopic Coupling
1/2" - 2"

TurboTrim™ Head Trimmer

Comfortable Rubber Handle Grips

Super Heavy Duty Steel Construction & Powder Coated Finish

Forward and Reverse Drive Ratchet Mechanism

7", 8" or 11"

*T Handle and Blades Sold Separately



Blade Depth Stopper
Keeps wires from getting cut!

PowerTrim™ Pro Series

Designed to Fit Most Major Straight Shaft Power Trimmer Bands
7", 8" or 11"



A Blade Adapter Kit
is needed to mount any blade

ULTRAMAX™ HOSES



UltraMax™ Featherweight

- 1200 psi Burst / 300 psi Operating
 3/4" = 9 lbs, 1" = 15 lbs (per 100 ft)
- Extremely lightweight with high pressure rating
 - Smooth outer fabric slides over turf without scuffing



UltraMax™ Blue

- 1200 psi Burst / 300 psi Operating
 3/4" = 27 lbs, 1" = 43 lbs (per 100 ft)
- Best combination of weight, durability, flexibility, pressure strength & flow rate
 - Soft & flexible - won't scuff greens



UltraMax™ Red

- 800 psi Burst / 200 psi Operating
 3/4" = 38 lbs, 1" = 59 lbs (per 100 ft)
- Ultimate choice for long life under heavy use
 - Kink, tangle & weather resistant



UltraMax™ Green

- 800 psi Burst / 200 psi Operating
 3/4" = 28 lbs, 1" = 38 lbs (per 100 ft)
- Lightweight with a high burst pressure rating
 - Smooth outer texture won't scuff greens



UltraMax™ Clear

- 600 psi Burst / 150 psi Operating
 3/4" = 20 lbs, 1" = 32 lbs (per 100 ft)
- Lightweight & economical
 - Ideal for light to medium commercial duty

ULTRAMAX™ NOZZLES

The **NEW ULTRAMAX**
Multi-BLAST nozzle
 4 nozzles in 1



Turbo Shift (12-43 GPM)
Premium Plus Pro Series
 3/4" & 1"



Full Throttle (15-40 GPM)
Premium Plus Pro Series
 3/4" & 1"



Turbo Shift (12-43 GPM)
Premium Pro Series
 3/4" & 1"



Full Throttle (15-40 GPM)
Premium Pro Series
 3/4" & 1"



RainPro™ Shower Nozzle (40 GPM)

Magnum™ Stinger

The All PRESSURE NOZZLE

The Magnum™ Stinger nozzle is an incredibly smooth operating nozzle, making it ideal for low pressure or low flow rate situations.



Magnum™ Nozzle

Hunter® SpotShot
Spray Nozzle
 (35 GPM)
 3/4" & 1"



CoolPro™
Valve &
Nozzle
 (4-6 GPM)



Precision™ Nozzles



ACCESSORIES

PelletPro™ Applicator Gun For Solid Wetting Agent Tablets



LiquidPro™ Applicator Gun For Liquid Wetting Agents



Tournament Ready® Plus with Actosol® Pellets

HOSE CADDIE™ Hose Reel

No more lifting, twisting, or winding up hoses



FEATURES:

- Carries Over 125 ft of 1" or 150 ft of ¾" Hose
- Quick Coupler Key Holder Mounted to Frame
- Optional Hose Guide Mounts to Reel for Easy Winding
- Includes a 10 ft UltraMax Blue Leader Hose



NEW Optional
Hose Guide

PowerFLOW Series

Twist-Ease™ Kink Eliminator - Never Fight with a Tangled Hose Again!



FEATURES:

- High Quality, High Flow, Brass Swivel that fits between your hose and nozzle
- Simply pull the hose by the nozzle and all twists, kinks and tangles will spin out with the swivel making untangling your hose a breeze!
- Available in 1" NPSH or ¾" GHT



DRAINBLASTER™ Nozzle

High Pressure Drain Cleaning Nozzle 3/4" & 1"



This unique hose-end, high pressure nozzle guides itself in cleaning out drains, to remove debris with ease. Special feature includes a wire attachment connector for using wire locator to determine drain route.

POWERBLAST™ Super Sweeper

Solid Brass Sweeper Nozzle

FEATURES:

- Solid Machined Brass Construction
- Constant Flow Smooth Operation
- Simple Reliable Long Life



HIGH FLOW VALVES AND ADAPTERS



POWERGULP™ Pump

For Professional Water Removal

Pump Specifications:

- Flow Rate - 11 GPM
- Length - 48"
- Weight - 4 lbs (without battery)
- Battery Run Time - Up to 60 Minutes w/ 4 Amp Hr. Battery
- Head Height - 15 ft
- Not For Use on Flammable Liquids
- 18 Volt



NEW

**POWER
GULP™**

GULP™ PRO Pumps

Water Removal Pumps 72" or 36" discharge hose



GULP™ PRO Syringe

SPORTSTURF IRRIGATION

YOUR SOURCE FOR SPRINKLER PRODUCTS

GRAB A BOX AND GET BUSY!



SUPERINTENDENTS AND IRRIGATORS TRUST
SPORTSTURF IRRIGATION FOR REBUILT, NEW AND
AFTERMARKET PRODUCTS

Scan and Sign Up to Receive
Special Offers & Discounts!



SportsTurf

IRRIGATION

(800) 492-8378

www.sportsturfirrigation.com

SportsTurf Irrigation is an independent service and manufacturing business and is not affiliated with, or authorized as a representative, service provider, or contractor of services by The Toro Company or Rain Bird Corporation. All references to OEM brands, trademarks, model numbers, and/or the display of certain identifying images herein are done solely for the purpose of identification of independent services provided by SportsTurf Irrigation. All trademarks contained herein belong to their respective manufacturers. Pricing terms and conditions are subject to change without notification. Visit our website at www.sportsturfirrigation.com for additional terms and conditions. This catalog and all its content are protected by intellectual property or proprietary rights held solely by Water Utilities Services, Inc. None of the images or copy may be copied or reproduced for commercial use without written approval from Water Utilities Services, Inc.