

SportsTurf
IRRIGATION

Repair & Product 2025 Catalog



THE BEST IN THE BUSINESS FOR AFTERMARKET PARTS AND REBUILT SPRINKLERS

(800) 492-8378

sportsturfirrigation.com



WHAT WE DO BEST

FOR OUR CUSTOMERS, WE:

OFFER cost-saving “Aftermarket” options for your irrigation budget: cases, solenoids, valves and more.

REPAIR RAIN BIRD® and TORO® sprinklers and controllers— send yours to us for repair.

SELL fully-reconditioned RAIN BIRD® and TORO® sprinklers. (1 year warranty)

STOCK a huge inventory of current and hard-to-find parts.

BUY your old irrigation system or sprinklers and pay for the freight to ship to us.

PROVIDE a fully-funded UPS® label to send your sprinklers and parts in for repair.

We have over **44** years of experience repairing sprinkler parts and components.



REBUILT CONVERSION ASSEMBLIES & COMPLETE SPRINKLERS

1" INLET SPRINKLERS or 1½" INLET SPRINKLERS



CONVERSION

**PART CIRCLE
CONVERSIONS &
DRIVE MOTORS
CAN BE REPAIRED!**

\$44



COMPLETE

1" FULL CIRCLE CONVERSION ASSEMBLIES

| Part Number | Description | Price |
|-------------|----------------------|---------|
| 89-1982 | 734 Conversion Assy | \$86.00 |
| 102-2530 | 834S Conversion Assy | \$98.00 |
| TO DT34 | DT34 Conversion Assy | \$98.00 |
| 102-3212 | 864 Conversion Assy | \$99.00 |

1½" FULL CIRCLE CONVERSION ASSEMBLIES

| Part Number | Description | Price |
|-------------|----------------------|----------|
| 9-3901 | 674 Conversion Assy | \$88.00 |
| 89-4359 | 754 Conversion Assy | \$92.00 |
| 102-2532 | 854S Conversion Assy | \$106.00 |
| TO DT54 | DT54 Conversion Assy | \$106.00 |

1" PART CIRCLE CONVERSION ASSEMBLIES

| Part Number | Description | Price |
|-------------|-----------------------------|----------|
| 89-7015 | 765 Conversion Assy | \$99.00 |
| 102-5391 | 835S Conversion Assy | \$118.00 |
| TO DT35 | DT35 Conversion Assy | \$118.00 |
| 102-2550 | 865 Conversion Assy | \$110.00 |
| Repair | Part Circle Conversion Assy | \$44.00 |

1½" PART CIRCLE CONVERSION ASSEMBLIES

| Part Number | Description | Price |
|-------------|-----------------------------|----------|
| 89-6998 | 785 Conversion Assy | \$104.00 |
| 102-5393 | 855S Conversion Assy | \$129.00 |
| TO DT55 | DT55 Conversion Assy | \$129.00 |
| 102-2552 | 885S Conversion Assy | \$118.00 |
| Repair | Part Circle Conversion Assy | \$44.00 |

WE DO IT ALL! REBUILT CONVERSION ASSEMBLIES OR COMPLETE SPRINKLERS

REBUILT 1" COMPLETE SPRINKLERS



| | |
|----------------|----------|
| DT 34 VIH | \$180.00 |
| DT 35 VIH | \$190.00 |
| 734 HYD/COM | \$110.00 |
| 734 VIH | \$138.00 |
| 765 HYD/COM | \$120.00 |
| 765 VIH | \$149.00 |
| 834 VIH Series | \$180.00 |
| 835 VIH Series | \$190.00 |

REBUILT 1½" COMPLETE SPRINKLERS



| | |
|----------------|----------|
| DT 54 VIH | \$189.00 |
| DT 55 VIH | \$204.00 |
| 674 HYD/COM | \$125.00 |
| 674 VIH | \$155.00 |
| 754 HYD/COM | \$126.00 |
| 754 VIH | \$159.00 |
| 785 HYD/COM | \$140.00 |
| 785 VIH | \$169.00 |
| 854 VIH Series | \$189.00 |
| 855 VIH Series | \$204.00 |

Subject to Availability

VALVES & PILOT VALVES

AFTERMARKET 1" & 1½" ELECTRIC BOTTOM/FOOT VALVE REPLACEMENTS



1" BOX OF 6: \$264.00
\$44.00 each

STI TO 10048 Short Pin - 700 Series
STI TO 10024 Long Pin - 800 Series



1½" BOX OF 6: \$378.00
\$63.00 each

STI TO 15003

PROVEN COST SAVERS



★★ SPORTSTURF IRRIGATION EXCLUSIVES ★★



BOTTOM/FOOT VALVES 1" & 1½" (REBUILT)

1" 700 / 800 SERIES



| 700 Series | | |
|-------------|-------------|---------|
| Part Number | Description | Price |
| 89-1048 | Electric | \$49.00 |
| 89-1047 | Check-O | \$26.00 |
| 89-1046 | Hydraulic | \$29.00 |
| 89-1048-R* | Repair | \$30.00 |
| 800 Series | | |
| 102-0624 | Electric | \$49.00 |
| 102-0624-R* | Repair | \$30.00 |



1½" 700/800 SERIES

| 700/800 Series | | |
|----------------|-------------|---------|
| Part Number | Description | Price |
| 102-4003 | Electric | \$69.00 |
| 89-1037 | Check-O | \$42.00 |
| 89-1036 | Hydraulic | \$45.00 |
| 102-4003-R* | Repair | \$33.00 |

* Cylinder (Cap) Additional
Part Charge on Valve Repair

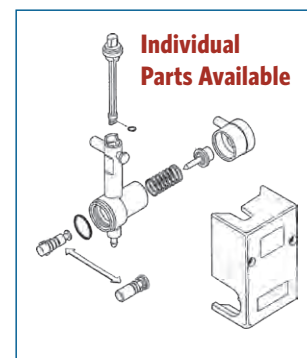
| Part Number | Description | Price |
|-------------|----------------------------------|---------|
| 102-5975 | Adjustable NO Solenoid | \$39.00 |
| 102-5178 | Adjustable WITH Solenoid | \$65.00 |
| 89-1000 | Pilot Valve NO Solenoid | \$33.00 |
| 89-0009 | Pilot Valve WITH Solenoid | \$56.00 |
| 89-1000-R | Pilot Valve - Repair | \$20.00 |
| 9-1876 | Tubing ½" x 11½" | \$3.80 |
| 360-0220 | O-Ring Body Assy | \$.45 |
| 102-0343 | Selector Cam Black | \$4.25 |

PILOT VALVES & PILOT VALVE PARTS (REBUILT)



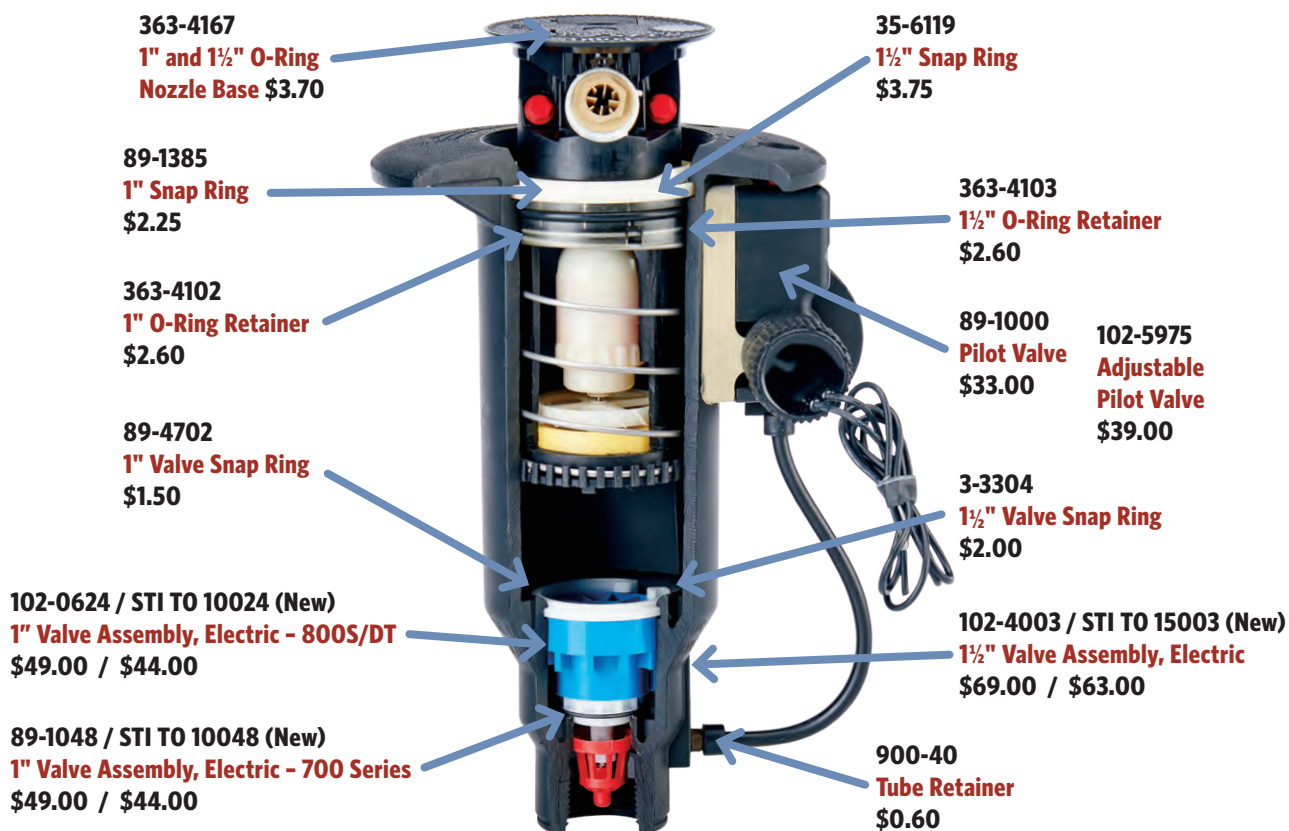
Adj Pilot Valve
with Solenoid

Pilot Valve
with Solenoid



Individual
Parts Available

1" & 1½" REBUILT SPRINKLER PARTS



1" CASE PARTS

| Part Number | Description | Price |
|-------------|---|----------|
| 35-9421 | 700 Series 1" Elec Case Only NO PV, Valve, Solenoid | \$53.00 |
| 89-4868 | 700 Series 1" Elec Case WITH PV, Valve, Solenoid | \$105.00 |
| 102-1090 | 800 Series 1" Elec Case Only - NO PV, Valve, Solenoid | \$64.00 |
| 102-1090-99 | 800 Series 1" Elec Case Assy WITH PV, Valve, Solenoid | \$137.00 |
| 35-9418 | 700 Series 1" Hydraulic Case Only | \$53.00 |
| 89-1385 | Snap Ring - Upper to Hold Sprinkler | \$2.25 |
| 89-4702 | Snap Ring - Lower to Hold Valve | \$1.50 |

1½" CASE PARTS


| Part Number | Description | Price |
|-------------|--|----------|
| 3-3389 | 700 Series 1½" Elec Case Only NO PV, Valve, Solenoid | \$65.00 |
| 89-1016 | 700 Series 1½" Elec Case Assy WITH PV, Valve, Solenoid | \$109.00 |
| 102-1149 | 800 Series 1½" Elec Case Only NO PV, Valve, Solenoid | \$70.00 |
| 102-1149-99 | 800 Series 1½" Elec Case Assy WITH PV, Valve, Solenoid | \$145.00 |
| 3-3343 | 700 Series 1½" Hydraulic Case Only | \$60.00 |
| 35-6119 | Snap Ring - Upper to Hold Sprinkler | \$3.75 |
| 3-3304 | Snap Ring - Lower to Hold Valve | \$2.00 |



O-RINGS, SOLENOIDS & TOOLS

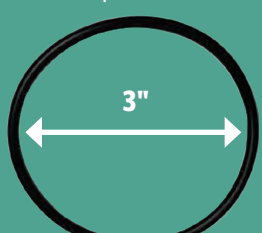
THESE ALWAYS NEED TO BE REPLACED!
NO BAG QUANTITY REQUIRED
CHANGING O-RINGS JUST MAKES SENSE!

363-4167
Nozzle Base for
1" Inlet & 1/2"
Inlet Sprinklers
\$3.70



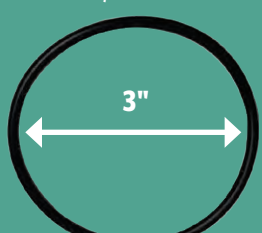
1/2"

363-4102
Retainer for 1" Inlet
Sprinklers
\$2.60




3"

1" O-Ring
Retainer

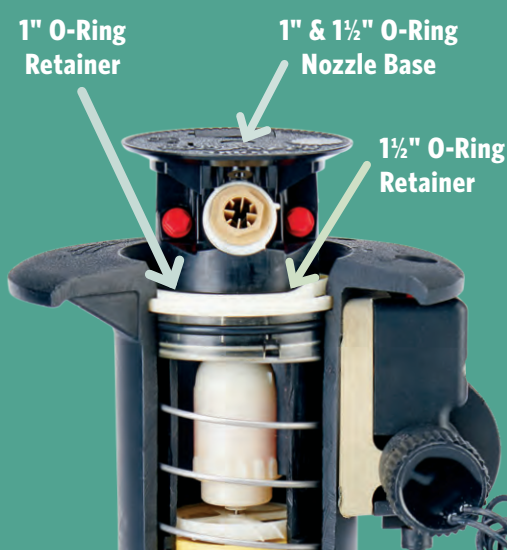


3"

363-4103
Retainer for 1 1/2"
Inlet Sprinklers \$2.60




3 1/4"



1" & 1 1/2" O-Ring
Nozzle Base

1 1/2" O-Ring
Retainer



995-82
**Arc
Adjustment
Tool**

Check Out **NEW** Solenoids
from SportsTurf
Irrigation

\$34.00



**UH A-SKTRB
SuperKey XL™**



**Easy
Reach
Key™**

Toro®

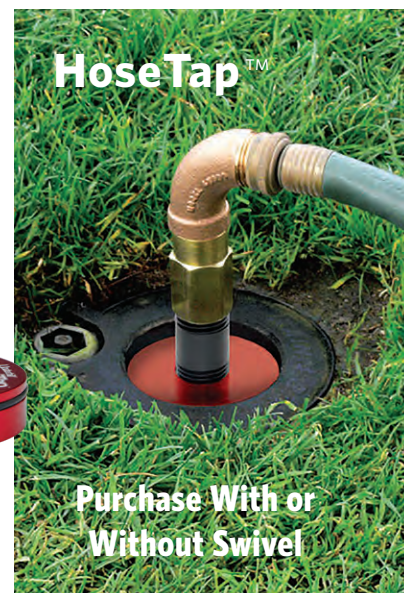


**UH A-ERT
Easy Reach™
Key
15" Length**

Includes:
HoseTap™
1" MHT Brass Swivel
and 3/4" Adapter



**UH HN-T100S
1" Inlet
UH HN-T150S
1 1/2" Inlet**



HoseTap™

**Purchase With or
Without Swivel**

PURCHASE SPARE PARTS OR SEND IN FOR REPAIR



RB 635711-01
PAR+ ES Timing Assembly



RB 633224-01
MSC+ Timing Assembly



RB 633224-02
PAR+ Timing Assembly



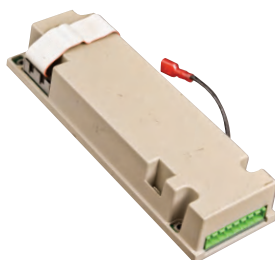
RB 633224-03
PAR 24 Timing Assembly



RB 633224-04
PAR 16 Timing Assembly



RB HAO200
OSM



RB HAO100
ROM-8
* Qty Discount Available



RB H44500
2-Wire Communication
Module



RB 633226-02
PAR+ ES and PAR+ Power
Interface Module



**Complete
PAR+ ES
Controller
16 - 72 Stations**



89-7852
NW8000 Modem Board



102-3497
Network VP Faceplate



91-1952
NW8000 Faceplate

**Rain Bird® and Toro®
Controllers / Faceplates
can be repaired!***

Contact us for a Shipping Label!

*** ALL CONTROLLERS SUBJECT TO AVAILABILITY**

TURF PRODUCTS



**Rain Bird® Quick Couplers
Valves, Swivels & Keys**
3/4" - 1½"

RAIN BIRD® QUICK COUPLER REFERENCE

| Order | Top of QC | Bottom of QC |
|-------|-----------|--------------|
| #33 | 1/2" | 3/4" |
| #44 | 3/4" | 1" |
| #5 | 1" | 1" |
| #7 | 1½" | 1½" |

QUICK COUPLER KEY REFERENCE

| Order | Top of Key | Bottom of Key |
|-------|------------|---------------|
| 33K | 3/4" | 1/2" |
| 44K | 1" | 3/4" |
| 55K | 1" | 1" |
| 7K | 1½" | 1½" |



VersaLid™
Universal Replacement Lid
6", 7" & 10" Round Valve Box

4 Easy Steps to Build Your Specific Westlake Swing Joint

STEP 1: SPECIFY A BODY DIAMETER BY NUMBER

| First Digit | Diameter Size |
|-------------|---------------|
| 1 | 1" |
| 2 | 1¼" |
| 3 | 1½" |

STEP 2: SPECIFY AN INLET BY NUMBER (PIPE IN GROUND)

| Second Digit | Inlet Style |
|--------------|-----------------------|
| 1 | Socket |
| 2 | Spigot (short) |
| 3 | Male Thread (MIPT) |
| 4 | Male ACME |
| 7 | Long Spigot (4" Long) |

STEP 3: SPECIFY OUTLET BY NUMBER (SPRINKLER TO THREAD ONTO)

| Third Digit | Outlet Style |
|-------------|--|
| 1 | Socket |
| 2 | MIPT (available in 1", 1¼" and 1½" diameter) |
| 3 | Enlarging MIPT (available in 1", 1¼" and 1½" diameter) |
| 4 | MIPT Special (available in 1" and 1¼" diameter) |
| 8 | Increasing ACME (available in 1½" diameter) |
| 0 | ACME (available in 1", 1¼" and 1½" diameter) |
| A | ACME Special (available in 1 ¼" diameter) |

STEP 4: SPECIFY LAY LENGTH

| Last Three Digits | Lay Length |
|-------------------|------------|
| -208 | 8" |
| -212 | 12" |
| -218 | 18" |

Standard Sizes

Call for Custom Sizes!

EXAMPLE

Step 1
1¼" Diameter

Step 2
MIPT Inlet

Step 3
1¼" x 1½"
MIPT Outlet

Lay Length

Step 4
18" Lay Length
Unitized Swing Joint

So if you need a 1¼" Swing Joint with an MIPT inlet and a 1½" Increasing MIPT outlet. (18" Lay Length)

your part number would be: 233-218

Also see LASCOFITTINGS.COM for online configurator

**3M DBR/Y
Splice Kit**

Box of 100
or Purchase
Individually



COMPARE K-RAIN® TO OTHER PGP STYLE ROTORS

High Performance, Low Maintenance



This patented "Easy Arc Setting" just made your irrigator's life a whole lot easier!!!

7 Year Warranty

Available on ALL models of K-Rain® rotors.

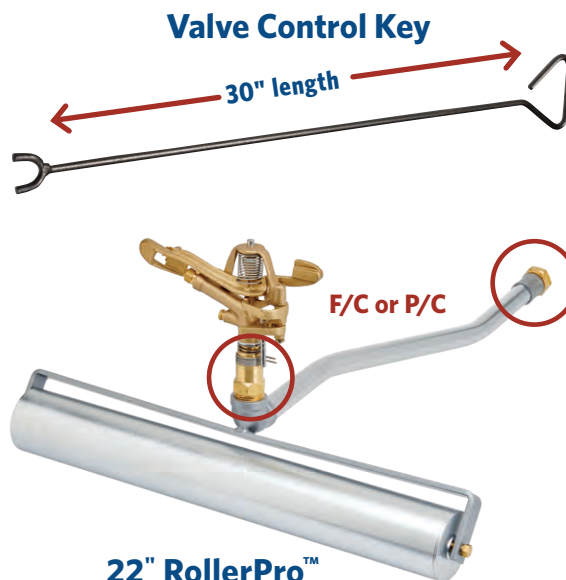


| K-RAIN® | MINIPRO 6" 20/Case | SUPERPRO 20/Case | RPS75i 20/Case | PROSPORT 12/Case |
|-----------------------------|--|--|---|-------------------------------------|
| INLET | 1/2" | 3/4" | 3/4" | 1" |
| COVERAGE | 40° - 360° | 40° - 360° | 40° - 360° | 40° - 360° |
| FLOW RANGE (GPM) | .8 - 3.8 | .8 - 11.1 | .9 - 9.7 | 5.1 - 32.5 |
| PRESSURE (PSI) | 20 - 70 | 20 - 70 | 20 - 70 | 40 - 90 |
| RADIUS | 18' - 33' | 26' - 46' | 26' - 48' | 43' - 77' |
| RECLAIMED WATER | YES | YES | YES | YES |
| WHAT YOU SHOULD KNOW | Perfect for landscape areas and for replacing fixed sprays | Best 3/4" Option Reduce distance & flow rate proportionately | Direct replacement for Hunter® PGP® & PGP® Ultra® | Great Block Type System replacement |

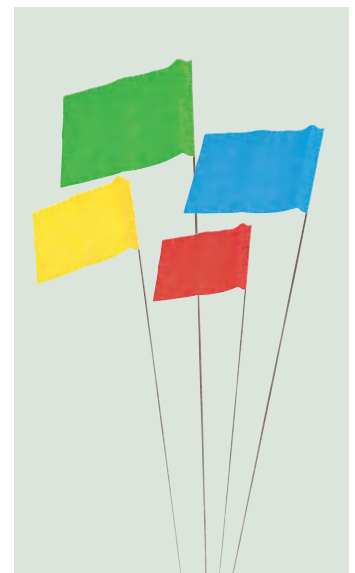
★ CLEAN UP AROUND ★ YOUR HEADS



TAS Trimmer Sprinkler
Head Trimmer 3 3/4" - 10"



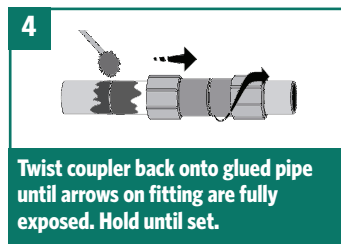
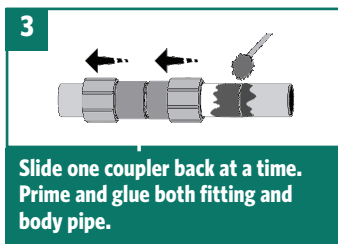
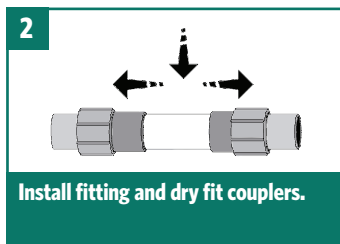
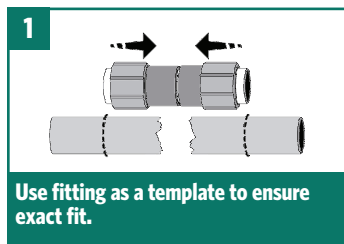
22" RollerPro™
Works with both 1" and 3/4" hoses using the included adapters and full circle and part circle sprinklers.
(sprinkler sold separately)



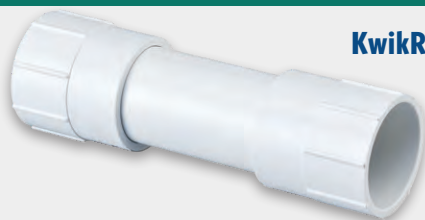
Marking Flags
(Bundle of 100)

REPAIR COUPLINGS & ACCESSORIES

KwikRepair™ WE LOVE THIS PRODUCT & YOU WILL TOO!



A Permanent Solvent Weld Repair Fitting



KwikRepair Coupling
1/2" - 4"



KwikRepair Tee
1/2" - 2"

Other Coupler Options



Harco Knock On Repair Coupling
1 1/2" - 6"



NDS Compression Coupling
1" - 3"



Slip Fix Telescopic Coupling
1/2" - 2"

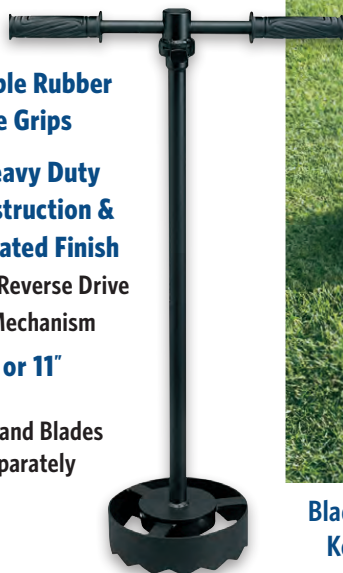
TurboTrim™ Head Trimmer

Comfortable Rubber
Handle Grips

Super Heavy Duty
Steel Construction &
Powder Coated Finish
Forward and Reverse Drive
Ratchet Mechanism

7", 8" or 11"

*T Handle and Blades
Sold Separately



Blade Depth Stopper
Keeps wires from
getting cut!

PowerTrim™ Pro Series

Designed to Fit Most
Major Straight Shaft
Power Trimmer Bands
7", 8" or 11"



A Blade Adapter Kit
is needed to mount
any blade

ULTRAMAX™ HOSES



UltraMax™ Featherweight

1200 psi Burst / 300 psi Operating

3/4" = 9 lbs, 1" = 15 lbs (per 100 ft)

- Extremely lightweight with high pressure rating
- Smooth outer fabric slides over turf without scuffing



UltraMax™ Blue

1200 psi Burst / 300 psi Operating

3/4" = 27 lbs, 1" = 43 lbs (per 100 ft)

- Best combination of weight, durability, flexibility, pressure strength & flow rate
- Soft & flexible - won't scuff greens



UltraMax™ Red

800 psi Burst / 200 psi Operating

3/4" = 38 lbs, 1" = 59 lbs (per 100 ft)

- Ultimate choice for long life under heavy use
- Kink, tangle & weather resistant



UltraMax™ Green

800 psi Burst / 200 psi Operating

3/4" = 28 lbs, 1" = 38 lbs (per 100 ft)

- Lightweight with a high burst pressure rating
- Smooth outer texture won't scuff greens



UltraMax™ Clear

600 psi Burst / 150 psi Operating

3/4" = 20 lbs, 1" = 32 lbs (per 100 ft)

- Lightweight & economical
- Ideal for light to medium commercial duty

Magnum™ Stinger

The All PRESSURE NOZZLE

The Magnum™ Stinger nozzle is an incredibly smooth operating nozzle, making it ideal for low pressure or low flow rate situations.



ULTRAMAX™ NOZZLES

The NEW ULTRAMAX Multi-BLAST nozzle 4 nozzles in 1



Turbo Shift (12-43 GPM)
Premium Plus Pro Series
3/4" & 1"



Full Throttle (15-40 GPM)
Premium Plus Pro Series
3/4" & 1"



Turbo Shift (12-43 GPM)
Premium Pro Series
3/4" & 1"



Full Throttle (15-40 GPM)
Premium Pro Series
3/4" & 1"



RainPro™ Shower Nozzle (40 GPM)



**Hunter® SpotShot
Spray Nozzle**
(35 GPM)
3/4" & 1"

Magnum™ Nozzle



CoolPro™ Valve & Nozzle (4-6 GPM)



Precision™ Nozzles



ACCESSORIES

PelletPro™ Applicator Gun

For Solid Wetting Agent Tablets



LiquidPro™ Applicator Gun

For Liquid Wetting Agents



Tournament Ready® Plus
with Actosol® Pellets

HOSE CADDIE™ Hose Reel

No more lifting, twisting, or winding up hoses



FEATURES:

- Carries Over 125 ft of 1" or 150 ft of 3/4" Hose
- Quick Coupler Key Holder Mounted to Frame
- Optional Hose Guide Mounts to Reel for Easy Winding
- Includes a 10 ft UltraMax Blue Leader Hose



PowerFLOW Series

Twist-Ease™ Kink Eliminator - Never Fight with a Tangled Hose Again!



FEATURES:

- High Quality, High Flow, Brass Swivel that fits between your hose and nozzle
- Simply pull the hose by the nozzle and all twists, kinks and tangles will spin out with the swivel making untangling your hose a breeze!
- Available in 1" NPSH or 3/4" GHT



DRAINBLASTER™ Nozzle

High Pressure Drain Cleaning Nozzle 3/4" & 1"



This unique hose-end, high pressure nozzle guides itself in cleaning out drains, to remove debris with ease. Special feature includes a wire attachment connector for using wire locator to determine drain route.

POWERBLAST™ Super Sweeper

Solid Brass Sweeper Nozzle

FEATURES:

- Solid Machined Brass Construction
- Constant Flow Smooth Operation
- Simple Reliable Long Life



HIGH FLOW VALVES AND ADAPTERS



POWERGULP™ Pump

For Professional Water Removal

Pump Specifications:

- Flow Rate - 11 GPM
- Length - 48"
- Weight - 4 lbs (without battery)
- Battery Run Time - Up to 60 Minutes w/ 4 Amp Hr. Battery
- Head Height - 15 ft
- Not For Use on Flammable Liquids
- 18 Volt



NEW

**POWER
GULP**

MudGuard™

GULP™ PRO Pumps

Water Removal Pumps 72" or 36" discharge hose



GULP™ PRO Syringe

SPORTSTURF IRRIGATION

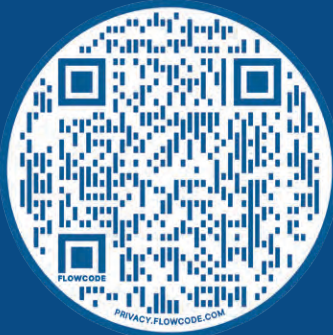
YOUR SOURCE FOR SPRINKLER PRODUCTS

GRAB A BOX AND GET BUSY!



SUPERINTENDENTS AND IRRIGATORS TRUST
SPORTSTURF IRRIGATION FOR REBUILT, NEW AND
AFTERMARKET PRODUCTS

Scan and Sign Up to Receive
Special Offers & Discounts!



SportsTurf

IRRIGATION

(800) 492-8378

www.sportsturfirrigation.com

SportsTurf Irrigation is an independent service and manufacturing business and is not affiliated with, or authorized as a representative, service provider, or contractor of services by The Toro Company or Rain Bird Corporation. All references to OEM brands, trademarks, model numbers, and/or the display of certain identifying images herein are done solely for the purpose of identification of independent services provided by SportsTurf Irrigation. All trademarks contained herein belong to their respective manufacturers. Pricing terms and conditions are subject to change without notification. Visit our website at www.sportsturfirrigation.com for additional terms and conditions. This catalog and all its content are protected by intellectual property or proprietary rights held solely by Water Utilities Services, Inc. None of the images or copy may be copied or reproduced for commercial use without written approval from Water Utilities Services, Inc.